

# Hand Wash Grapefruit and Mandarin



When dosing concentrate chemicals always use the recommended PPE, and always read the labels to check best practice for handling both the undiluted & ready to use solutions.

## Product Usage Guide

PREMIUM

### BK107-5



Instructions for use:



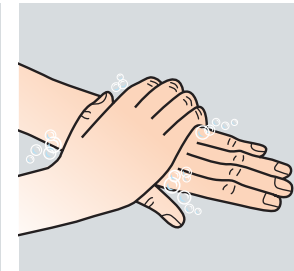
**1** Use pelican pump on 5L bottle to dispense into smaller bottle or dispenser.



**2** Remove any jewellery from hands and wrists to allow effective cleaning. Wet hands with clean water and apply hand soap.



**3** Rub hands to produce a lather.



**4** Right palm over the back of the left hand and vice versa.



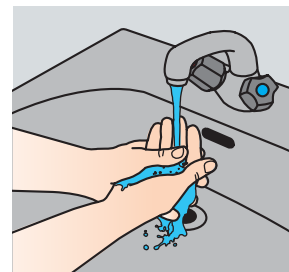
**5** Intertwine the fingers of the right hand over the left and vice versa. Pay particular attention to the areas between fingers and finger nails.



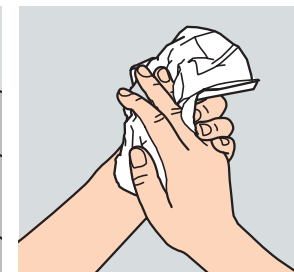
**6** Rotationally rub backwards and forwards with clasped fingers of the right hand in the left palm. Change hands and repeat.



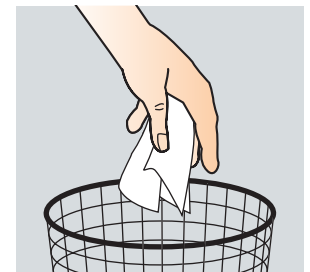
**7** Grip the left wrist and work cleanser into the skin. Do the same with the right wrist.



**8** Rinse off all traces of soap and lather with clean water.



**9** Dry hands thoroughly with a disposable paper towel.



**10** Discard paper towel in waste bin, avoid touching the bin.

#### Areas for use



Scan for further product details

#### Health & Safety

Please refer to relevant COSHH Safety Data Sheet



Avoid contact with eyes.  
If contact occurs, rinse immediately with clean water.

pH 7.5

www.jangro.net